



**< M E M O >**

# Standard schematic diagrams

## CD servo control section

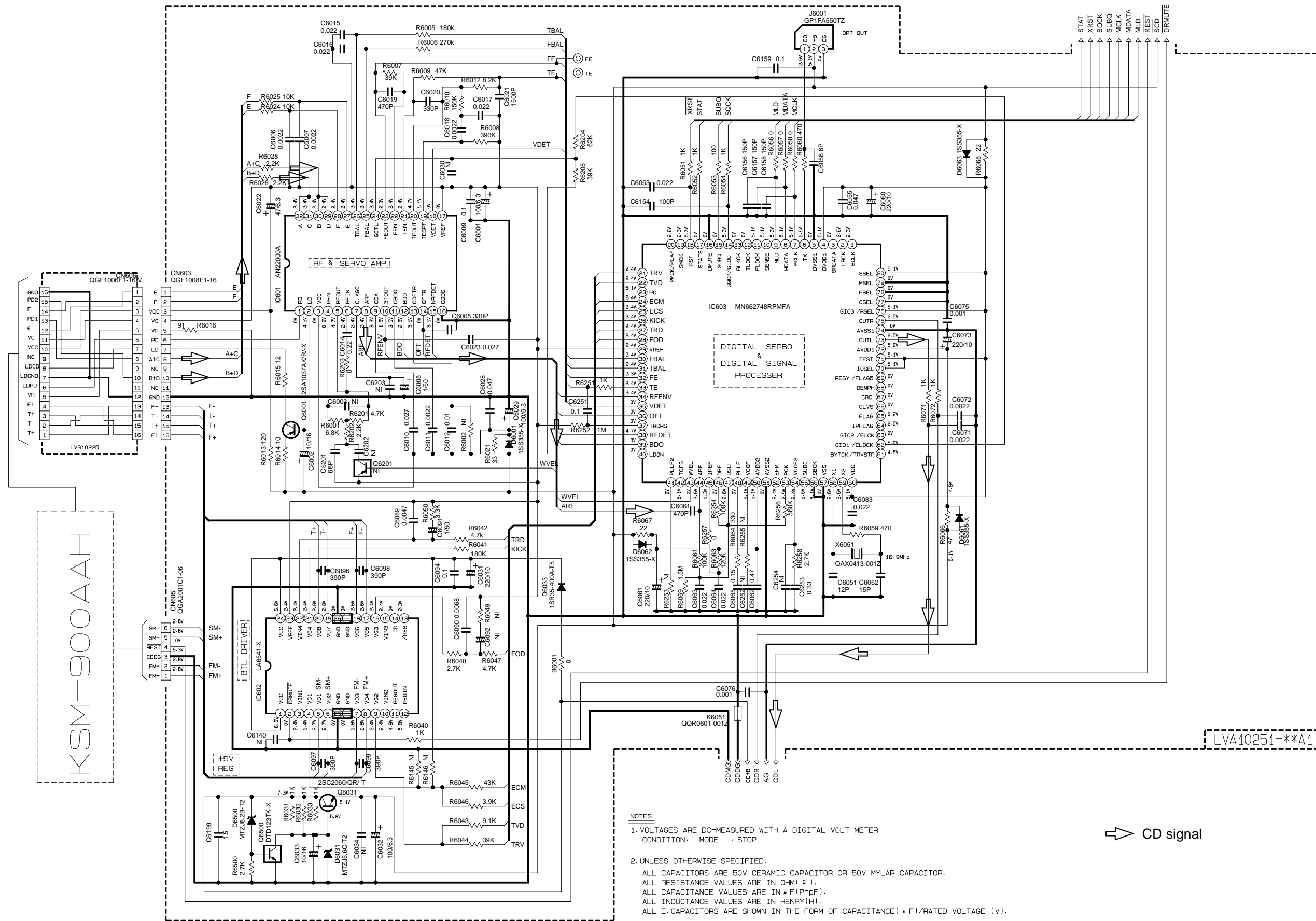
5

4

3

2

1



- NOTES**
1. VOLTAGES ARE DC-MEASURED WITH A DIGITAL VOLT METER  
CONDITION: MODE : STOP
  2. UNLESS OTHERWISE SPECIFIED.  
ALL CAPACITORS ARE 50V CERAMIC CAPACITOR OR 50V MYLAR CAPACITOR.  
ALL RESISTANCE VALUES ARE IN OHM(Ω).  
ALL CAPACITANCE VALUES ARE IN PICO(F=PpF).  
ALL INDUCTANCE VALUES ARE IN HENRY(H).  
ALL E-CAPACITORS ARE SHOWN IN THE FORM OF CAPACITANCE(μF)/RATED VOLTAGE (V).

/s/R/LV5200602

Note:tr/sjcsd550/LV5200602\_GNS10002-001A 2/8  
FS-SD550R/770R/990R\_ALL ver.

Power supply & main circuit section

FS-SD990R / FS-SD770R  
FS-SD550R

FS-SD990R / FS-SD770R  
FS-SD550R

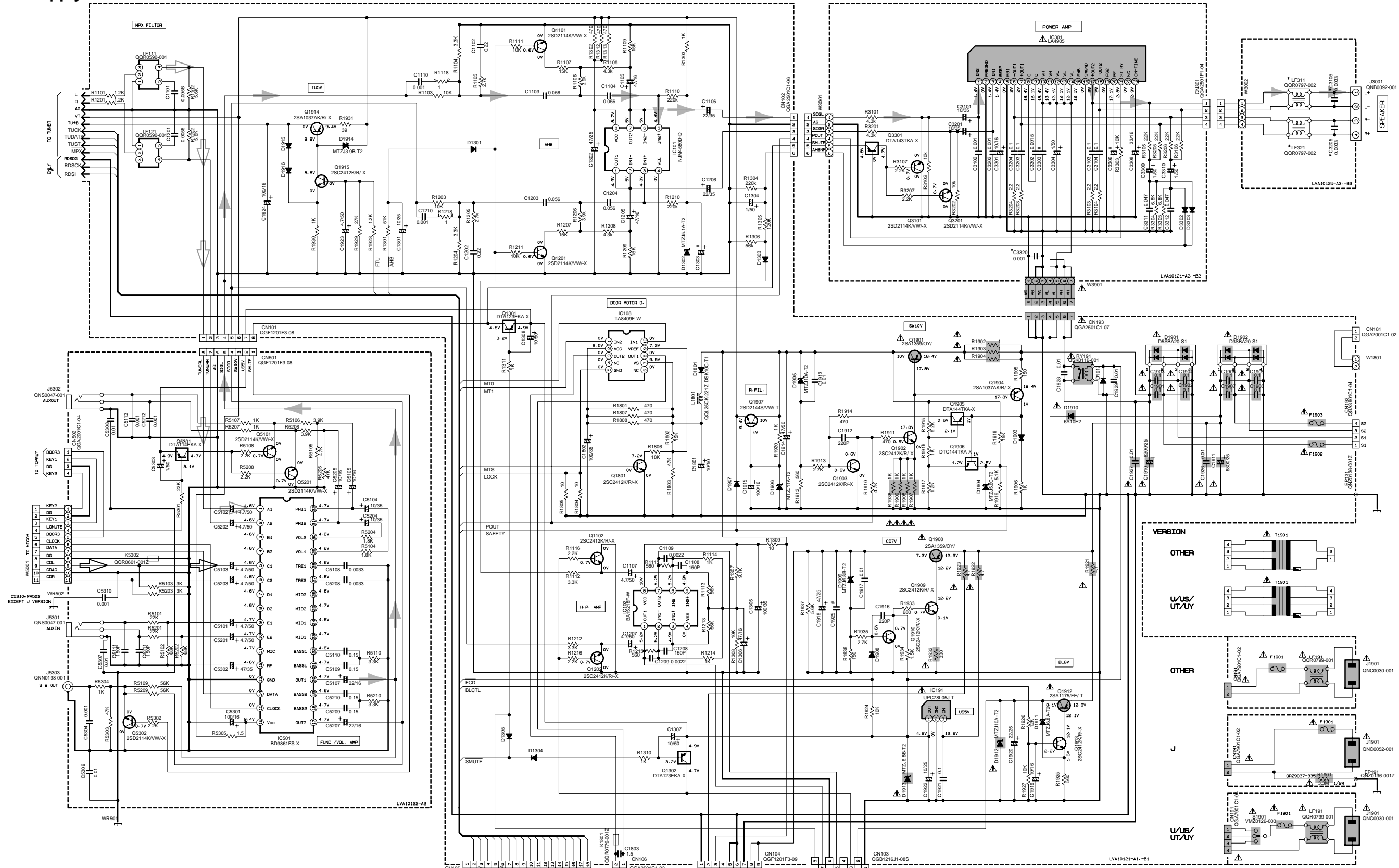
5

4

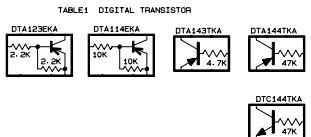
3

2

1



1. VOLTAGES ARE DC-MEASURED WITH A DIGITAL VOLT METER OR OSCILLOSCOPE WITHOUT INPUT SIGNAL. CONDITION --- CD STOP MODE
2. UNLESS OTHERWISE SPECIFIED RESISTORS ARE 1/8W ±5% CARBON RESISTOR. ALL RESISTANCE VALUES ARE IN OHM(Ω). ALL CAPACITORS ARE CERAMIC CAPACITOR OR MYLAR CAPACITOR. ALL CAPACITANCE VALUES ARE IN pF(pF). ALL INDUCTANCE VALUES ARE IN mH(mH). ALL E-CAPACITORS ARE SHOWN IN THE FORM OF CAPACITANCE (μF)/RATED VOLTAGE (V). ALL DIODES ARE 1SS133
3. \*MARKS ARE B/E/EN/VE/UB VERSION ONLY OTHER VERSIONS ARE OPEN OR SHORT



#Marks

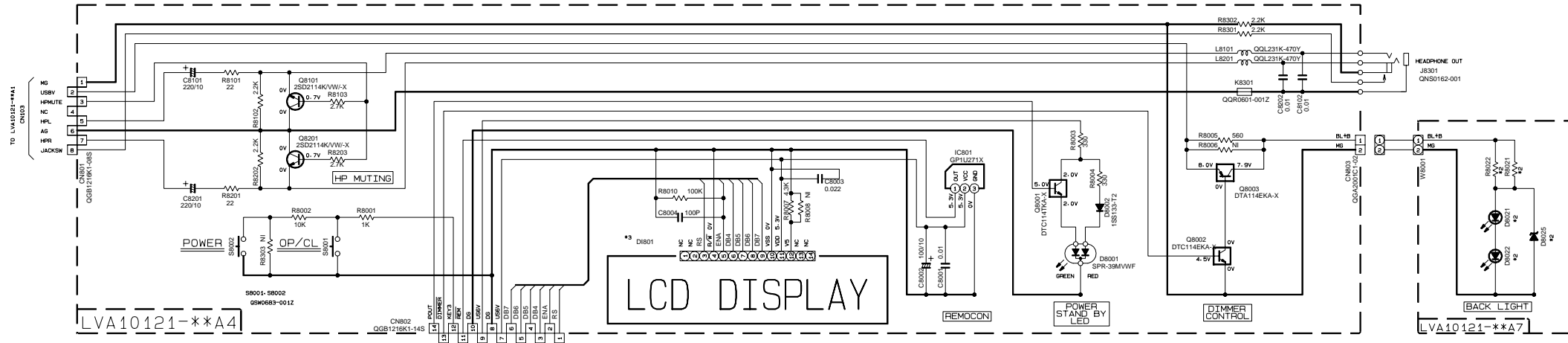
FS-SD550	22/35	0.01	100/35	0.01
FS-SD770	↑	↑	↑	↑
FS-SD990	47/25	0.1	47/25	0.022

	T1901	F1901	F1902	F1903
J/C	QGT0286-002	QMF512-1R0-J1	QMF511-8R0-J1	QMF511-4R0-J1
B/C/D/E	QGT0286-003	QMF512-1R0-J1	QMF512-6R3-J1	QMF512-3R15-J1
U/S/V/W	QGT0286-004	QMF512-1R0-J1	QMF512-5R0-J1	↑
A	QGT0286-005	QMF512-1R0-J1	QMF512-6R3-J1	↑
U/P	QGT0286-006	↑	↑	↑

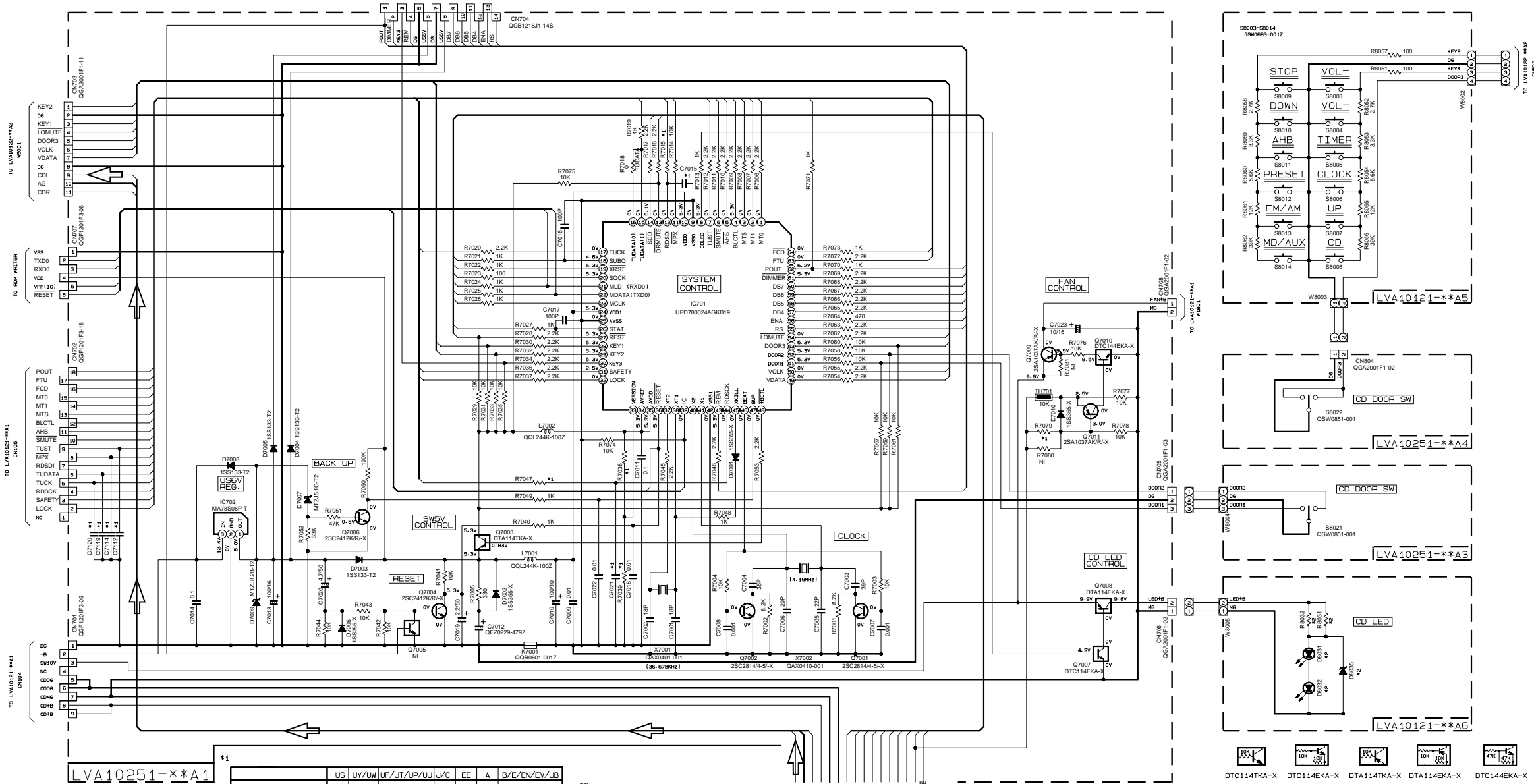
- Parts are safety assurance parts. When replacing those parts make sure to use the specified one.
- Tuner signal
- CD signal
- Main signal

System control section

5



4



3

2

1

NOTES

- VOLTAGES ARE DC-MEASURED WITH A DIGITAL VOLT METER OR OSCILLOSCOPE WITHOUT INPUT SIGNAL. CONDITION --- CD STOP AT AC SUPPLY. VOL: 1G: BASS; 0: TREBLE; 0: AHB; 0: DIMMER; OFF.
- UNLESS OTHERWISE SPECIFIED - RESISTORS ARE 1/10W (OR 1/16W) ±5% MG RESISTOR. ALL RESISTANCE VALUES ARE IN OHM(Ω). ALL CAPACITORS ARE CERAMIC CAPACITOR OR MYLAR CAPACITOR. ALL CAPACITANCE VALUES ARE IN μF(μF). ALL INDUCTANCE VALUES ARE IN mH(mH). ALL E. CAPACITORS ARE SHOWN IN THE FORM OF CAPACITANCE (μF)/RATED VOLTAGE (V).

	US	UY/UW	UF/UT/UP/UJ	J/C	EE	A	B/E/EN/EV/UB
R7038	27K	68K	27K	47K	12K	4.7K	10K
R7039	4.7K	27K	4.7K	33K	27K	27K	-
R7015	-	-	-	-	1K	-	1K
C7015	-	-	-	-	100P	-	100P
R7047	-	-	-	-	1K	-	1K
C7021	-	-	-	-	100P	-	100P
C7112, C7114, C7119, C7120	100P	100P	100P	-	-	-	-
R7079	6.8K	5.1K	5.1K	5.1K	5.1K	5.1K	5.1K

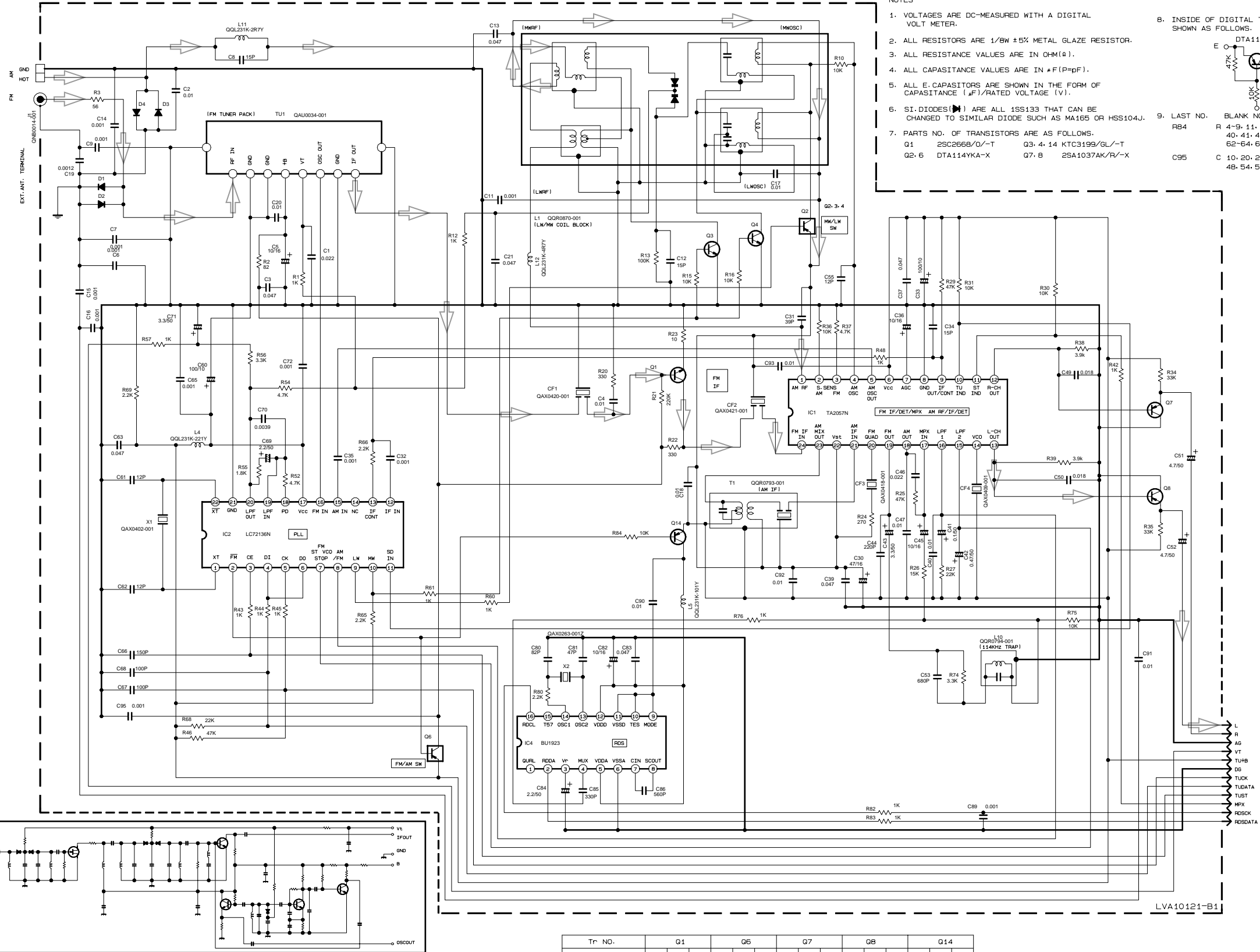
	FS-S2550(R)/770(R)	FS-S2590(R)
D8021, D8022	SELU1E50CM	TLYH156P
D8025	MTZJ10C-T2	-
R8021, R8022	100	390
D8031, D8032	SELU1E56EM	TLYH156P
D8035	MA3100/M/-X	-
R8031, R8032	430	560

	DIB01
FS-S0550/770	0LD0120-001
FS-S0990	0LD0198-001

/s/R/LVS200612

CD signal

■ Tuner section



- NOTES
- VOLTAGES ARE DC-MEASURED WITH A DIGITAL VOLT METER.
  - ALL RESISTORS ARE 1/8W ±5% METAL GLAZE RESISTOR.
  - ALL RESISTANCE VALUES ARE IN OHM(Ω).
  - ALL CAPACITANCE VALUES ARE IN pF(P=pF).
  - ALL E. CAPACITORS ARE SHOWN IN THE FORM OF CAPACITANCE (pF)/RATED VOLTAGE (V).
  - SI. DIODES(▷) ARE ALL 1SS133 THAT CAN BE CHANGED TO SIMILAR DIODE SUCH AS MA165 OR HSS104J.
  - PARTS NO. OF TRANSISTORS ARE AS FOLLOWS.  
Q1 2SC2668/D/-T Q3. 4. 14 KTC3199/GL/-T  
Q2. 6 DTA114YKA-X Q7. 8 2SA1037AK/R/-X
- B. INSIDE OF DIGITAL TRANSISTORS ARE SHOWN AS FOLLOWS.
- 
9. LAST NO. BLANK NO.  
R 4-9. 11. 14. 17-19. 28. 32. 33  
40. 41. 47. 49-51. 53. 58. 59  
62-64. 67. 70-73. 77-79. 81  
C 10. 20. 22-29. 38  
48. 54. 56-59. 64. 73-79. 87. 88

CONDITION	PIN NO.	1	2	3	4	5	6	7	8	9	10	11	12	13	14	15	16	17	18	19	20	21	22	23	24
IC1	FM NO SIGNAL	2.0	0.5	0	2.0	5.1	5.1	0	0	0.3	5.1	5.1	1.1	1.1	4.4	3.7	3.7	1.4	0	1.3	1.1	2.0	2.0	5.1	2.0
	FM 60dB STEREO	2.0	0.5	0	2.0	5.1	5.1	1.1	0	0.3	0	0	1.1	1.1	4.3	4.1	3.7	1.4	0	1.4	1.1	2.0	2.0	5.1	2.0
	AM NO SIGNAL	2.0	0.5	0	2.0	5.0	5.1	0	0	0.3	5.1	5.1	1.1	1.1	4.5	0.1	0	1.4	1.4	1.5	1.6	2.0	2.0	5.1	2.0
IC2	FM NO SIGNAL	2.4	0	0	5.1	5.0	5.1	3.7	3.7	2.0	3.8	5.1	0	0	0	0	2.6	5.1	1.0	1.0	3.7	0	2.7		
	FM NO SIGNAL	2.0	2.5	2.5	2.5	5.0	0	2.5	2.5	0	0	0	5.0	2.4	2.4	2.5	2.5								

Tr. NO.	Q1	Q6	Q7	Q8	Q14
PIN NO.	E C B	E C B	E C B	E C B	E C B
FM 87.5MHz NO SIGNAL	0 7.5 0.7	8.8 8.7 0	1.6 0 1.1	1.6 0 1.1	5.1 5.1 4.5
AM 522KHz NO SIGNAL	0 0 0	8.8 8.7 1.6	0 1.1 1.6	0 1.1 1.6	0.1 0.1 8.7

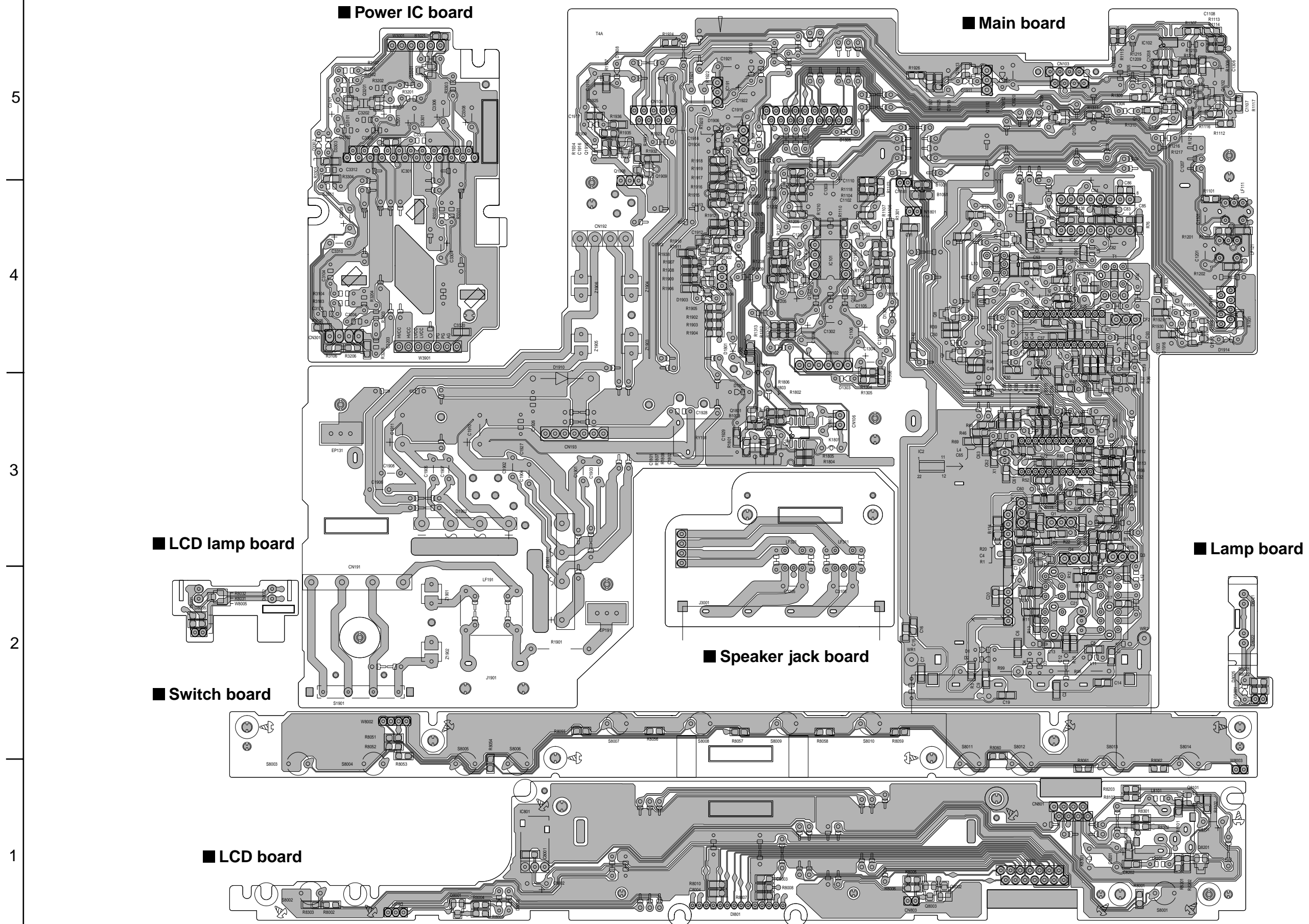
  

Tr. NO.	Q2	Q3	Q4
PIN NO.	E C B	E C B	E C B
AM 522KHz NO SIGNAL	2.0 2.0 0.1	0 0 0.7	0 0 0.7
AM 144KHz NO SIGNAL	2.0 2.0 2.0	0 0 0.1	0 0 0.1

➔ Tuner signal

Note: tr/s/jsc/sd550/LVS200295\_GNS10002-001A 5/8  
FS-SD550R/770R/990R\_B/E/EN/EV/UB

# Printed circuit boards



Note: d1/r/lvb10121/004a/10121  
FS-SD550R/FS-SD770R/FS-SD990R

